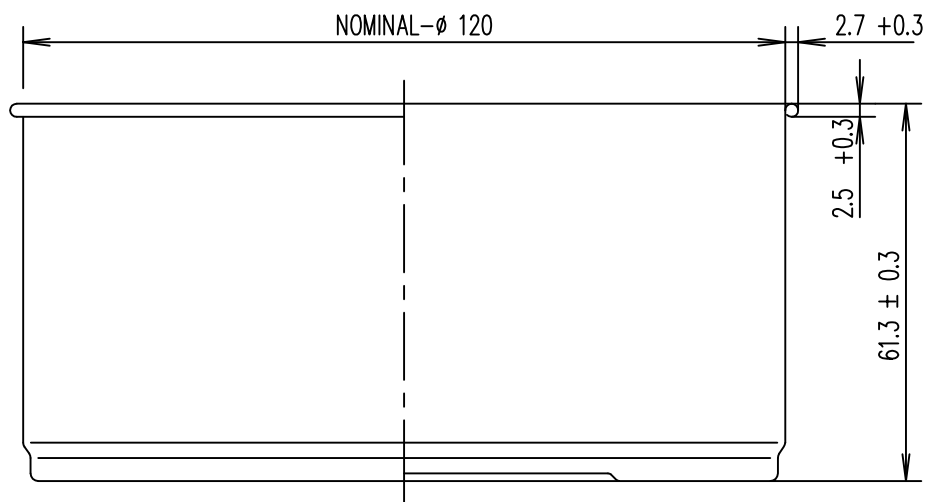
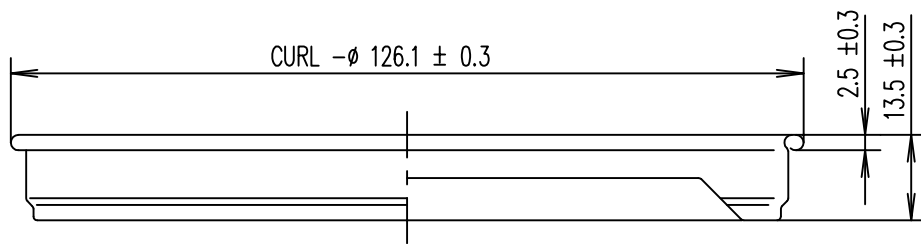


<b>Packaging item:</b>	Ø120x60 mm
<b>Content net:</b>	565 ml
<b>Date:</b>	1-3-2010
<b>Internal code:</b>	N/A
<b>Customer code:</b>	

Body construction	
<b>Typ</b>	Drawn, stackable
<b>Material</b>	Tinplate *)
<b>Tin Coating</b>	E2.8/2.8
<b>Thickness (mm)</b>	0,24
<b>Hardness</b>	T52
<b>Coating inside</b>	Plain
<b>Coating outside</b>	Clearcoated min 3g/m <sup>2</sup> , dry
<b>Remarks</b>	
Dimensions	
<b>Height (mm)</b>	60
<b>Diameter (mm)</b>	120
Miscellaneous	
<b>Weight (gr)</b>	64,9
<b>Palletisation</b>	1520 op europallet
Remarks	
<b>Minimum production</b>	
<b>Minimum deleverie</b>	1520 op europallet

\*) Tinplate according to EN10203.

Closure	
<b>Typ</b>	Stack bead
<b>Material</b>	Tinplate *)
<b>Tin Coating</b>	E2.8/2.8
<b>Thickness (mm)</b>	0,22
<b>Hardness</b>	T57
<b>Coating inside</b>	Plain
<b>Coating outside</b>	Clearcoated min 3g/m <sup>2</sup> , dry
<b>Remarks</b>	
Miscellaneous	
<b>Weight (gr)</b>	31,7
<b>Packaging</b>	



NOMINAL CAPACITY : 615ml ± 13 ml

We own the copyright on this specification. No part of this publication may be reproduced or made available to third parties without our prior consent. We reserve the right to modify this specification.		
CUSTOMER INFORMATION	Deep drawn-plug lid can for putty	KI-719/01E
	ø 120 x 60 mm	