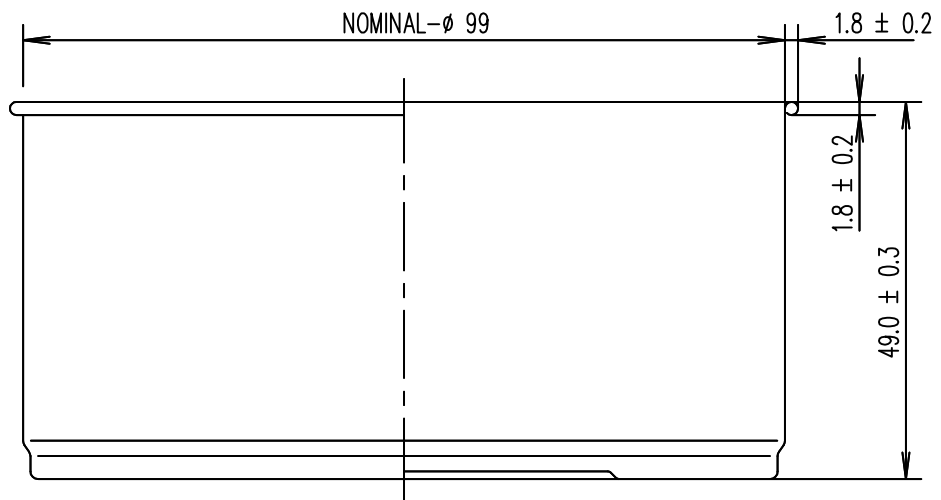
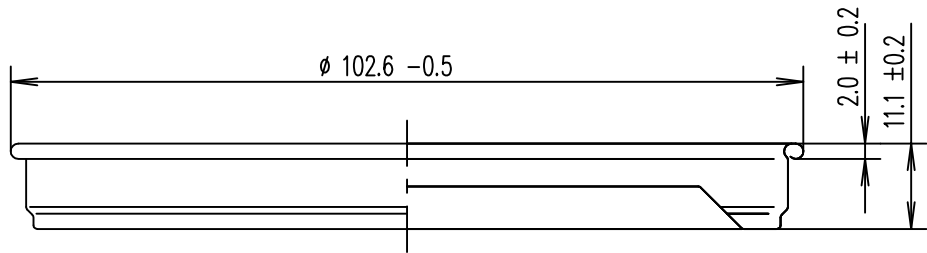


<b>Packaging item:</b>	Ø99x49 mm
<b>Content net:</b>	320 ml
<b>Date:</b>	1-3-2010
<b>Internal code:</b>	N/A
<b>Customer code:</b>	

Body construction	
<b>Typ</b>	Drawn, stackable
<b>Material</b>	Tinplate *)
<b>Tin Coating</b>	E2.8/2.8
<b>Thickness (mm)</b>	0,22
<b>Hardness</b>	T245
<b>Coating inside</b>	Plain
<b>Coating outside</b>	Clearcoated min 3g/m <sup>2</sup> , dry
<b>Remarks</b>	
Dimensions	
<b>Height (mm)</b>	49
<b>Diameter (mm)</b>	99
Miscellaneous	
<b>Weight (gr)</b>	38,9
<b>Palletisation</b>	op europallet
Remarks	
<b>Minimum production</b>	
<b>Minimum deleverie</b>	op europallet

\*) Tinplate according to EN10203.

Closure	
<b>Typ</b>	Stack bead
<b>Material</b>	Tinplate *)
<b>Tin Coating</b>	E2.8/2.8
<b>Thickness (mm)</b>	0,2
<b>Hardness</b>	T275
<b>Coating inside</b>	Plain
<b>Coating outside</b>	Clearcoated min 3g/m <sup>2</sup> , dry
<b>Remarks</b>	
Miscellaneous	
<b>Weight (gr)</b>	21,4
<b>Packaging</b>	



NOMINAL CAPACITY : 330 ml  $\pm 3\%$

We own the copyright on this specification. No part of this publication may be reproduced or made available to third parties without our prior consent. We reserve the right to modify this specification.		
CUSTOMER INFORMATION	Drawn plug lid can for putty $\phi 99$ x 49 mm	KI -718/01E